

ABEN

Europe

A Leading Exhibition & Show Model
Manufacturing Company

“Here to help make your thoughts into reality”



Digital

- ✓ CAD services
- ✓ 3D modelling
- ✓ Coding / Software development

Physical

- ✓ Physical Models / 3D printing
- ✓ Mould making / casting
- ✓ Laser cutting & engraving
- ✓ RAL colour matched paint finishes
- ✓ CNC machining for wood and plastics
- ✓ Professional labelling and information panels
- ✓ Transit cases with custom fitted foam inserts



Scar Jet Modular Trenching and Boulder Clearance Systems

1:40 scale models of subsea trenching and boulder clearance equipment.

- 1) 3D printed detailed model of a tracked seabed vehicle.
- 2) Set of models to demonstrate a modular trenching system. Supplied in a case to facilitate easy transport to client meetings.



Nylon Pipe Clamp

3D printed version of a new pipe-clamp design. Supplied in-time for an exhibition (5-day lead time). Normal manufacturing involves machining mould masters for a large injection moulding system which takes several weeks. 3D printed in nylon (same as the production version) and finished in RAL colour matched paints, with hardware supplied by the client.



Presentation Model: Wellhead

Presentation model from customer provided CAD files. 3D printed SLS finished in white with a CNC machined hardwood base.

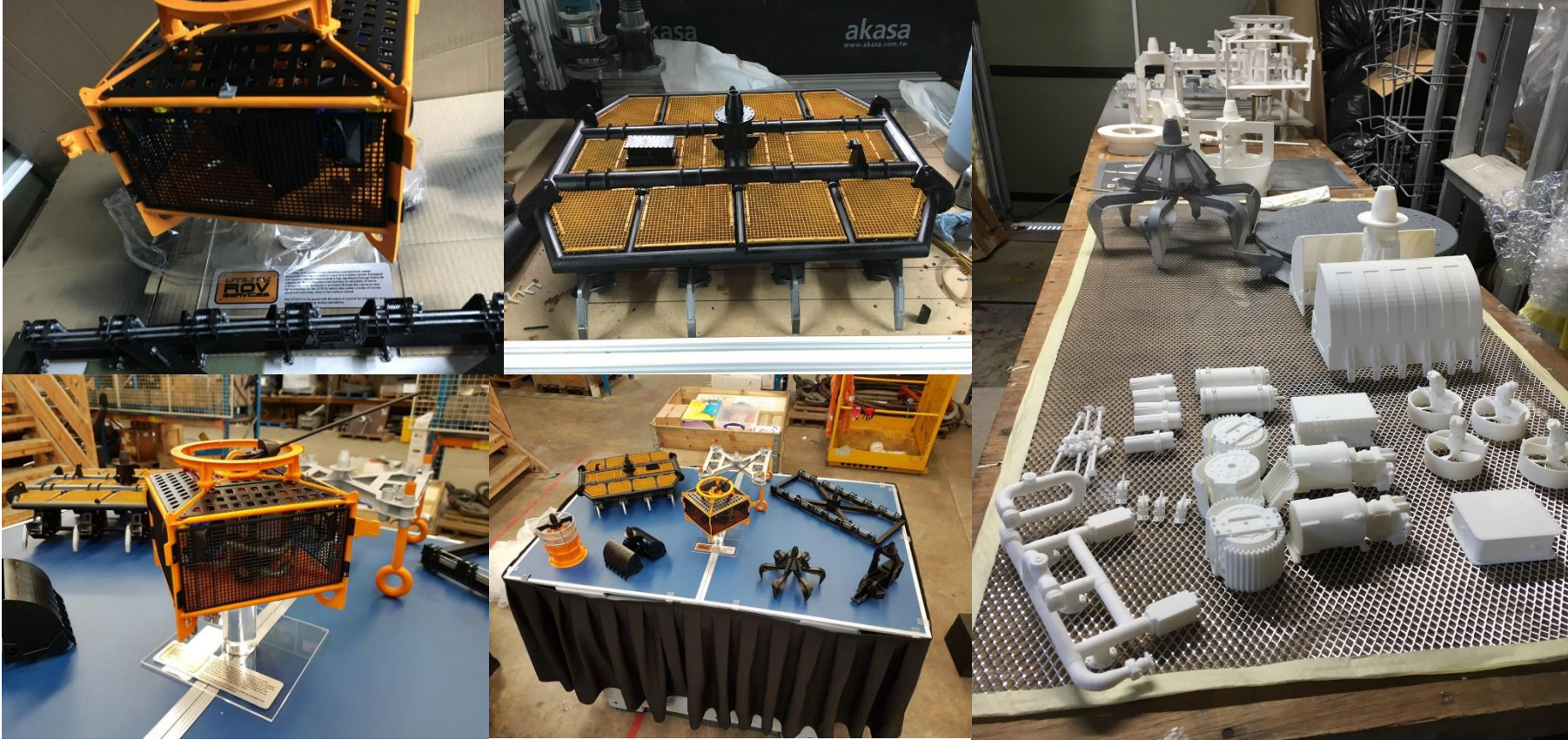


ROV with tool attachments

Detailed model of an ROV with a range of tool attachments. Finished in RAL matched colours. End-to-end solution provided with signage, display-stand, folding display table, fitted foam boxes for each model and a container for transport.



ROV Model – build details, based on 3D printed SLS parts



SLA 3D Printing with special Painting and Assembly

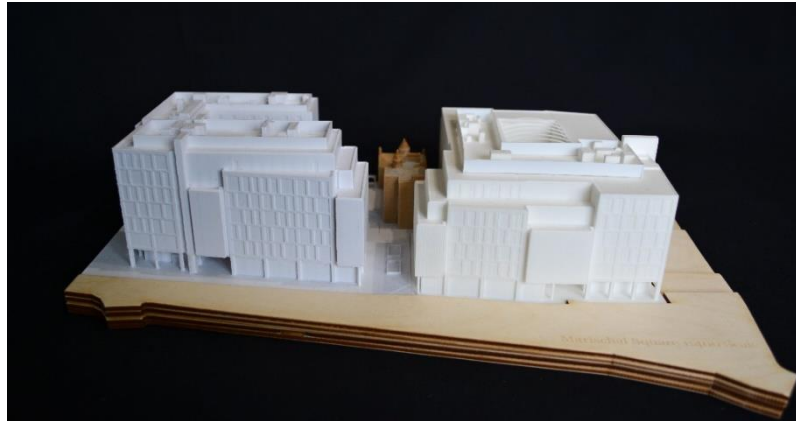


Mariscal Square Project

1:400 scale model of the Mariscal Square development for Morgan Sindall from client supplied BIM files in Revit format.

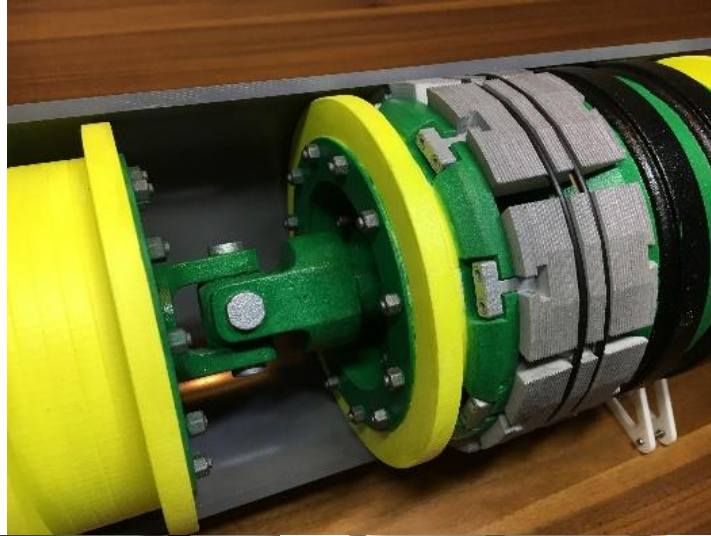
Showing the two new office/retail blocks, hotel and the relationship with the historic Provost Skene's House in the courtyard.

Each 3D printed building presented as a removable tile sitting on a stepped base showing the major slopes and roads.



Pipe Plugs

Scale desktop demo models of pipe plugs. 3D printed multiple models ordered for marketing teams worldwide.



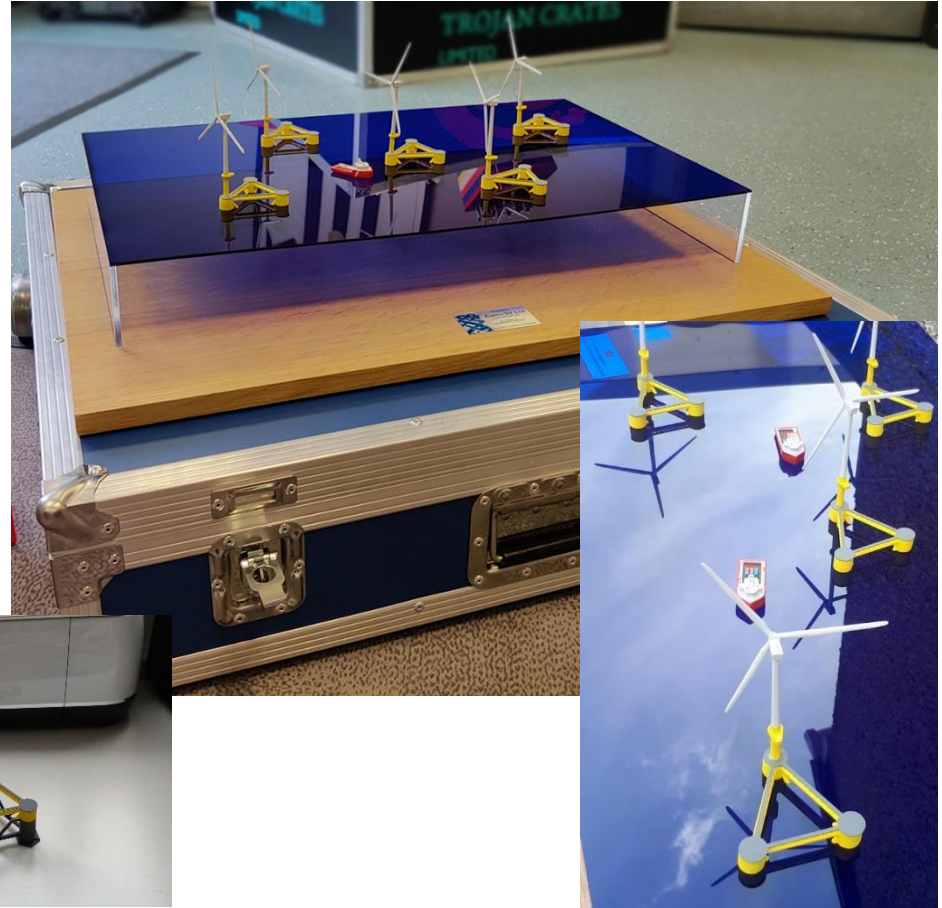
Floating Wind Turbine Array

Model of an array of floating wind turbines manufactured by 3D printing.

Magnets used to snap top and bottom sections either side of blue tinted acrylic representing the sea surface.

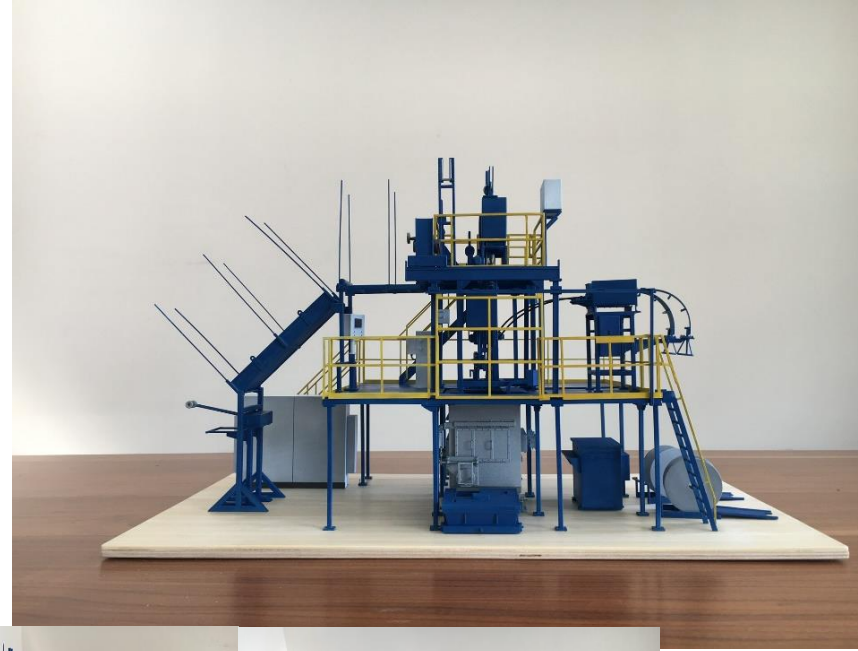
Magnets used to hold the blades to the turbine – so that they rotate and break away if knocked.

Supplied with transit case for storage and transport.



Copper Smelter Plant

A scale model of a copper smelter plant, manufactured in Dundee and sold worldwide. 3D printed in 60+ parts and assembled on a CNC-cut base.



Wave Energy Model

1:50 Scale models of wave powered, floating electricity generators.

Two 3D printed models, sized to be transportable in an airline hand-carry case.

Able to demonstrate swivel point designs for anchors and power cable.

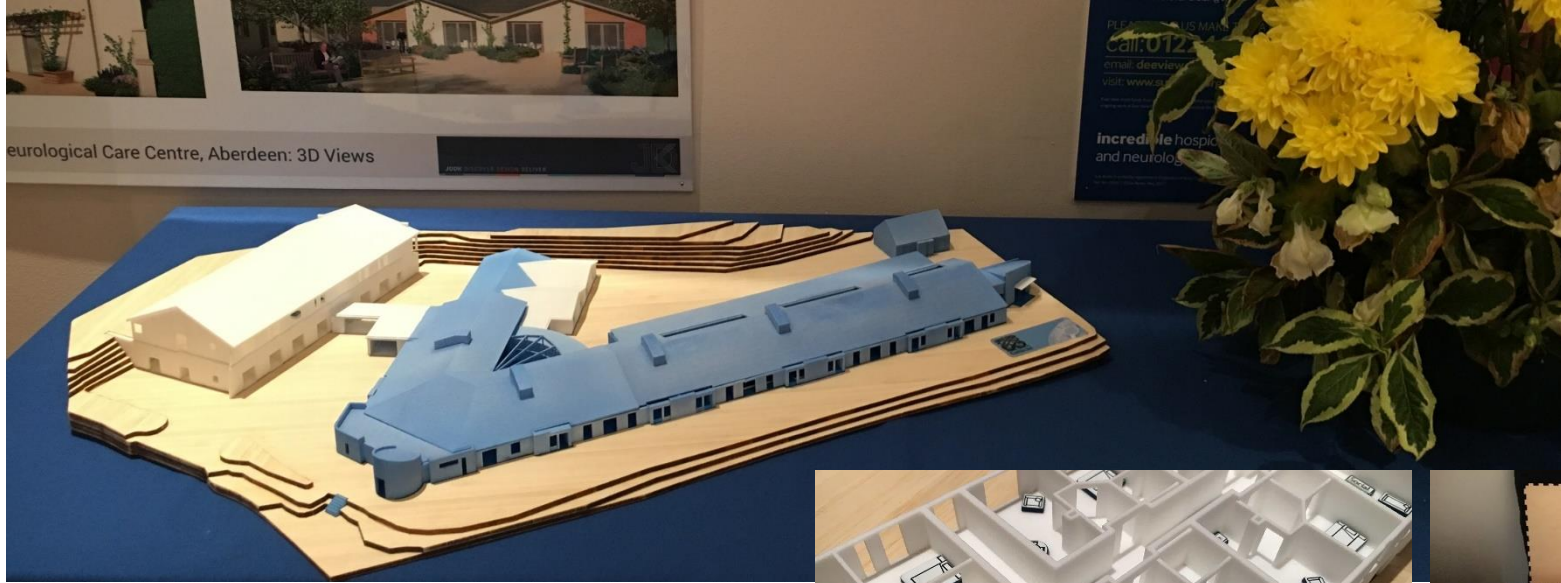
RAL Matched colours and logos.
Acrylic stand and signage



SLS 3D Printing with special Chrome finishing



Dee View Court Extension Project

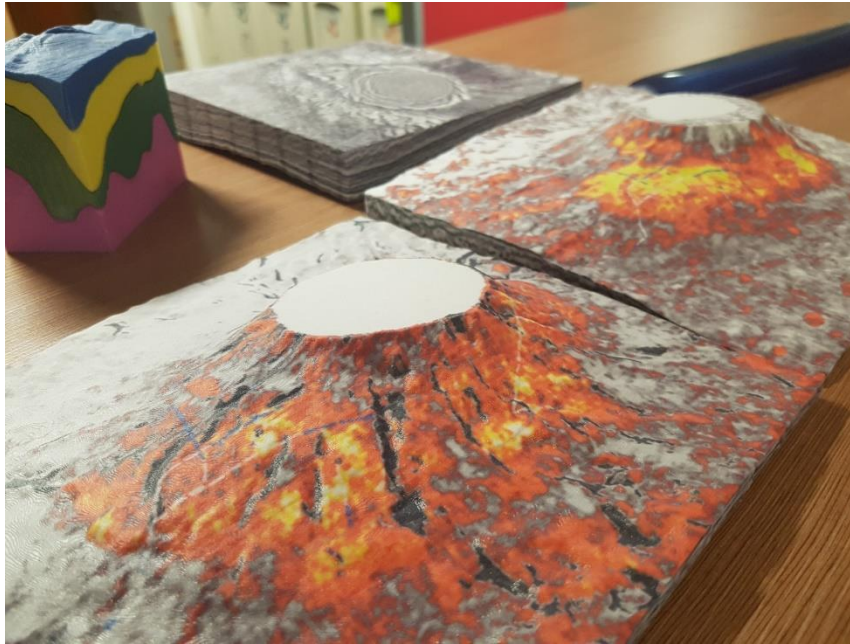


1:200 scale model of the Dee View Court extension to help with fundraising. The model needed to make a clear distinction between the existing building and the new extension.



Reservoir Model

Provide assistance with UV mapping of colour data onto a 3D mesh model derived from geospatial data.



Augmented Reality Baseboard

3D model of ASCO's supply chain for Offshore Europe'19 stand. Needed to work as a standalone display and to form a baseboard for AR projections.



Offshore Transit Crates

Scale models of a range of transit crates. Produced in 3D printed nylon for Offshore Europe'19



Historical Replica: Monymusk Reliquary

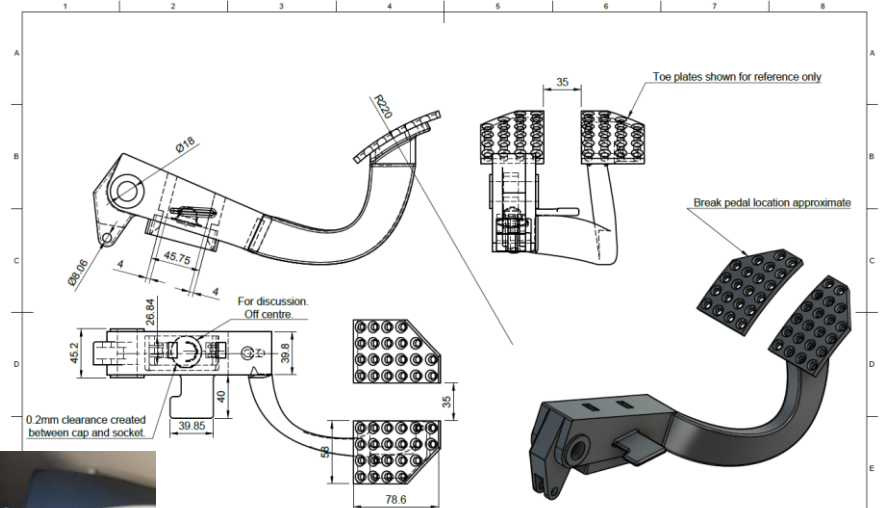
Historical replica from photo reference. Designed to be fairly robust so that it can be used in re-enactments and handled by the public.

The carcass was formed in 3D printed nylon, covered with CNC engraved aluminium foil. Jewels 3D printed then covered with imitation gold leaf. The original is in the National Museum of Scotland. The replica to be on permanent display at Arbroath Abbey leading up to the 700th anniversary of the Declaration of Arbroath in 2020.



Ferrari Clutch Pedal Arm

Reverse engineering of a clutch-pedal arm for a RHD Ferrari 612 Scaglietti. In support of a project to convert an automatic transmission to manual. Only 27 RHD, manual transmission cars of this model were ever made and parts are no longer available. CAD modelled from reference images from a maintenance manual (incomplete views), and measurements taken from the bracket that the arm needed to fit to. CNC machined in aluminium.



Exhibition Model

Scale models of an automated wax removal system. Supplied with transit case suitable for international shipping.

Parts removable to emphasise modular design.

Silicone cord and magnetic attachment points represent cabling.

Mixed materials, most parts 3D printed in nylon. Solar panels and base in cut acrylic sheet. Transparent pipework in acrylic tube.



Architectural Model

1:500 Scale model of a proposed recycling plant. Model covering the new site plus the surrounding area to give context.

Emphasises wooden panels as a key design feature.

Lays out vehicles to show flow of traffic through the site.

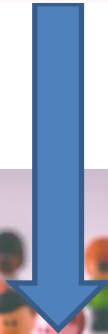
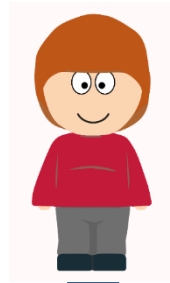
Keeps contextual elements fairly plain, but consistent so as not to distract from the main elements.

Supplied with transit case.



Avatar Projects

Coding / 3D printing project in support of a public engagement campaign. Personalised 3D models automatically generated from user input on a web page.



EUROPEAN OFFSHORE
WIND DEPLOYMENT CE

Turbines:
Eleven V164-8.4MW
Foundation Type:
Suction Bucket Jacket
Installed Capacity:
92.4MW
Annual Production:
309GWh
Transformer Supply:
66kV
Displaced CO₂



Make contact to see how ABEN Europe can help you?

Barry Assheton

Sales Manager

m:+44(0)776090124

e:bassheton@abeneurope.co.uk

w:abeneurope.co.uk

